

**Anti-Translin Antibody**  
**Rabbit polyclonal antibody to Translin**  
**Catalog # AP60066****Specification**

---

**Anti-Translin Antibody - Product Information**

Application	WB, IHC
Primary Accession	<a href="#">Q15631</a>
Other Accession	<a href="#">Q62348</a>
Reactivity	Human, Mouse, Rat, Bovine
Host	Rabbit
Clonality	Polyclonal
Calculated MW	26183

**Anti-Translin Antibody - Additional Information****Gene ID** 7247**Other Names**

Translin; Component 3 of promoter of RISC; C3PO

**Target/Specificity**

KLH-conjugated synthetic peptide encompassing a sequence within the center region of human Translin. The exact sequence is proprietary.

**Dilution**

WB~~WB (1/500 - 1/1000), IH (1/100 - 1/200)

IHC~~1:100~500

**Format**

Liquid in 0.42% Potassium phosphate, 0.87% Sodium chloride, pH 7.3, 30% glycerol, and 0.09% (W/V) sodium azide.

**Storage**

Store at -20 °C. Stable for 12 months from date of receipt

**Anti-Translin Antibody - Protein Information****Name** TSN ([HGNC:12379](#))**Function**

DNA-binding protein that specifically recognizes consensus sequences at the breakpoint junctions in chromosomal translocations, mostly involving immunoglobulin (Ig)/T-cell receptor gene segments. Seems to recognize single-stranded DNA ends generated by staggered breaks occurring at recombination hot spots.

**Cellular Location**

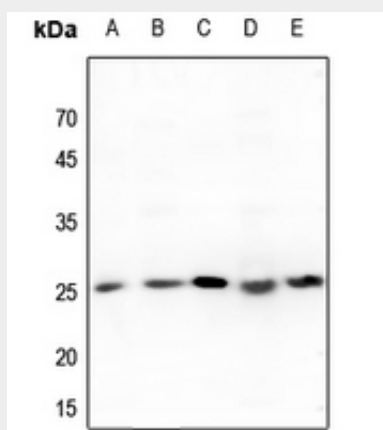
Cytoplasm. Nucleus

## Anti-Translin Antibody - Protocols

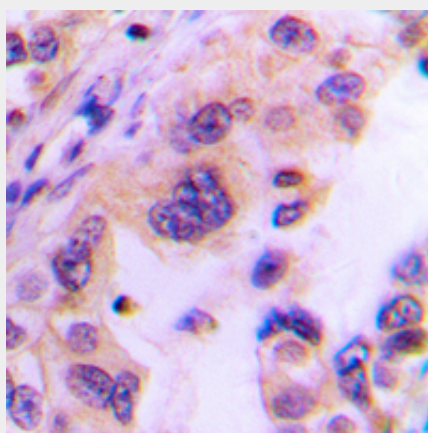
Provided below are standard protocols that you may find useful for product applications.

- [Western Blot](#)
- [Blocking Peptides](#)
- [Dot Blot](#)
- [Immunohistochemistry](#)
- [Immunofluorescence](#)
- [Immunoprecipitation](#)
- [Flow Cytometry](#)
- [Cell Culture](#)

## Anti-Translin Antibody - Images



Western blot analysis of Translin expression in Hela (A), mouse kidney (B), mouse testis (C), rat kidney (D), rat testis (E) whole cell lysates.



Immunohistochemical analysis of Translin staining in human lung cancer formalin fixed paraffin embedded tissue section. The section was pre-treated using heat mediated antigen retrieval with sodium citrate buffer (pH 6.0). The section was then incubated with the antibody at room temperature and detected using an HRP conjugated compact polymer system. DAB was used as the chromogen. The section was then counterstained with haematoxylin and mounted with DPX.

## Anti-Translin Antibody - Background

KLH-conjugated synthetic peptide encompassing a sequence within the center region of human

Translin. The exact sequence is proprietary.